

PREMIUM WHEEL ALIGNMENT SYSTEMS

geoliner[®]
WHEEL ALIGNMENT SYSTEMS

790



HOFMANN[®] 

ULTIMATE MOBILITY. ULTIMATE PRECISION.



Shown with optional VIN Code Scanner

Digismart Automatic Vehicle Height Tracking and Wireless Communication. The camera system follows the height of the vehicle, so they're always where you need them to be. And Wireless Communication eliminates connections between the camera towers and cabinet, giving you more flexibility and installation options than wall or floor mounted systems. The geoliner® 790 also provides continuous third camera calibration for even more precise readings. Plus, in addition to secure wheel clamping without touching the rim, it features the most advanced software and hardware we've ever offered. Yet it's so simple to operate, most any technician can perform quick, accurate alignments with confidence.



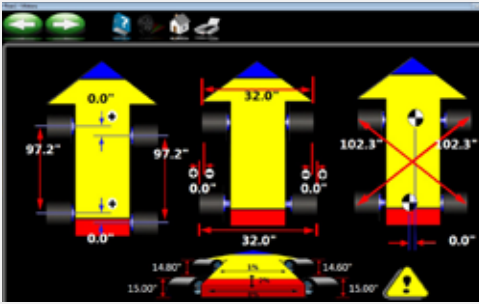
Quick Alignment Check

Quickly identifies if a car needs alignment. Audit printout allows dimensions and alignment to be shown on one simple page, perfect for collaboration with body shops.



Automatic Vehicle Height Tracking

The camera system follows the height of the vehicle, eliminating the need to adjust the aligner when you move the lift. Continuous third camera calibration provides accurate readings and reliable alignment results.



Patented Advanced Dimensioning

Cross-diagonal measurements identify frame or structural damage. Rolling Radius identifies mismatched tire sizes; a potential cause of vehicle pulling and drive complaints.



Patented EZ-Toe

Turn the front wheels and access difficult adjustment points while still displaying centered toe readings



Patented Ride Height Measurement

Measure ride height and obtain proper alignment specifications for those vehicles requiring it.



Easy to Follow Help Videos

View detailed videos of how to make needed adjustments to complete even the most complex tasks.



Versatile, Accurate Hardware

High resolution cameras produce accurate, live alignment readings and diagnostic data. Passive front and rear XD targets improve durability with no electronics to damage.



Touchless AC400 Wheel Clamping System

Fast and easy to use, the AC400 touchless wheel clamping system from Hofmann® provides secure clamping without touching the rim. This patented technology allows service technicians to receive accurate and repeatable results coupled with ease of use and durability.



VODI™

Vehicle Orientation Directional Indicator (VODI) guides the technician through the measurement process.



PRECISION MEASUREMENT SYSTEM WITH PATENTED AUTOMATIC VEHICLE HEIGHT TRACKING

The Hofmann® geoliner® 790 Wireless Imaging Wheel Alignment System provides flexible installation, usage and mobility options. Patented digital camera tracking automatically adjusts to the height of the vehicle.

BLUETOOTH® ENABLED MOBILE BASE UNIT

- Wireless communication eliminates connections between the camera towers and the cabinet to ease mobility and provides a variety of installation configurations

SPEED AND PRODUCTIVITY

- Automatic Vehicle Height Tracking - the camera system follows the height of the vehicle, eliminating the need to adjust the aligner when you move the lift
- Get readings in less than two minutes on a wide variety of vehicles and wheel sizes
- Comprehensive vehicle specification database with frequent updates ensures you always have the information to do the job right

AUTOMATIC CASTER SWEEP

- System automatically detects when the steering wheel is turned and initiates the caster sweep function to save time and eliminate errors

PATENTED ROLLING RADIUS

- Identify mismatched tire sizes - a potential cause of vehicle pulling and drive train damage

PATENTED CROSS-DIAGONAL

- Identify frame or structural issues before alignment adjustments are made

AVAILABLE MODELS

geoliner 790 with AC400 Wheel Clamps	EEWA753B
geoliner 790 with AC400 Wheel Clamps & ETHOS+	EEWA753BE
geoliner 790 with AC200 Wheel Clamps	EEWA753H
geoliner 790 with AC200 Wheel Clamps & ETHOS+	EEWA753HE

TECHNICAL SPECIFICATIONS

Tire diameter	19" - 39" (48.3 - 99.1cm)
Track width	48" - 96" (122 - 244cm)
Wheel base	79" - 180" (201 - 457cm)
Shipping weight	501 lbs (227kg)
Power requirements	100-240V 1Ph 50/60Hz UL201, C22.2, CE Approved

AC400 SPECIFICATIONS

Weight	6.9 lbs (3.3kg)
Clamping force	37 lbs (164.6 N)
Construction	Cast Magnesium

STANDARD ACCESSORIES

Wheel clamps & targets	Steering wheel holder
Brake pedal depressor	Two wheel chocks
Ride height target	Color inkjet printer

OPTIONAL ACCESSORIES

Dual wheel adapters for AC400 clamps	EAK0305J50A
Mobility Kit†	EAK0305J78A
Portable platforms for full height towers	EAK0305J58A
Docking cleats for portable platforms	EAK0305J77A
VIN Scanner	EAK0289J86B
AC400 Wheel Clamp Accessory Kit*	EAK0305J85A
AC200 Wheel Clamp Accessory Kit**	EAK0305J84A
Drive-on camera aid	EAK0289J91A
Hub adapter kit for wheels-off alignment	EAK0222J83B
AC200 universal wheel clamp extension kit	EAK0268J62A

†Includes EAK0305J58A & EAK0305J77A

*Standard with EEWA753B, EEWA753BE

**Standard with EEA753H, EEWA753HE

For more information regarding the geoliner® 790, call 800.251.4500 (US) or 501.505.2662 (Canada)
www.hofmann-usa.com / www.hofmann.ca

Hofmann is committed to product innovation and improvement. Therefore, specifications listed in this sell sheet piece may change without notice. ©2016 Snap-on Incorporated. Hofmann is a trademark, registered in the United States and other countries, of Snap-on Incorporated. All rights reserved. All other marks are marks of their respective holders.
10/16 SS133373E